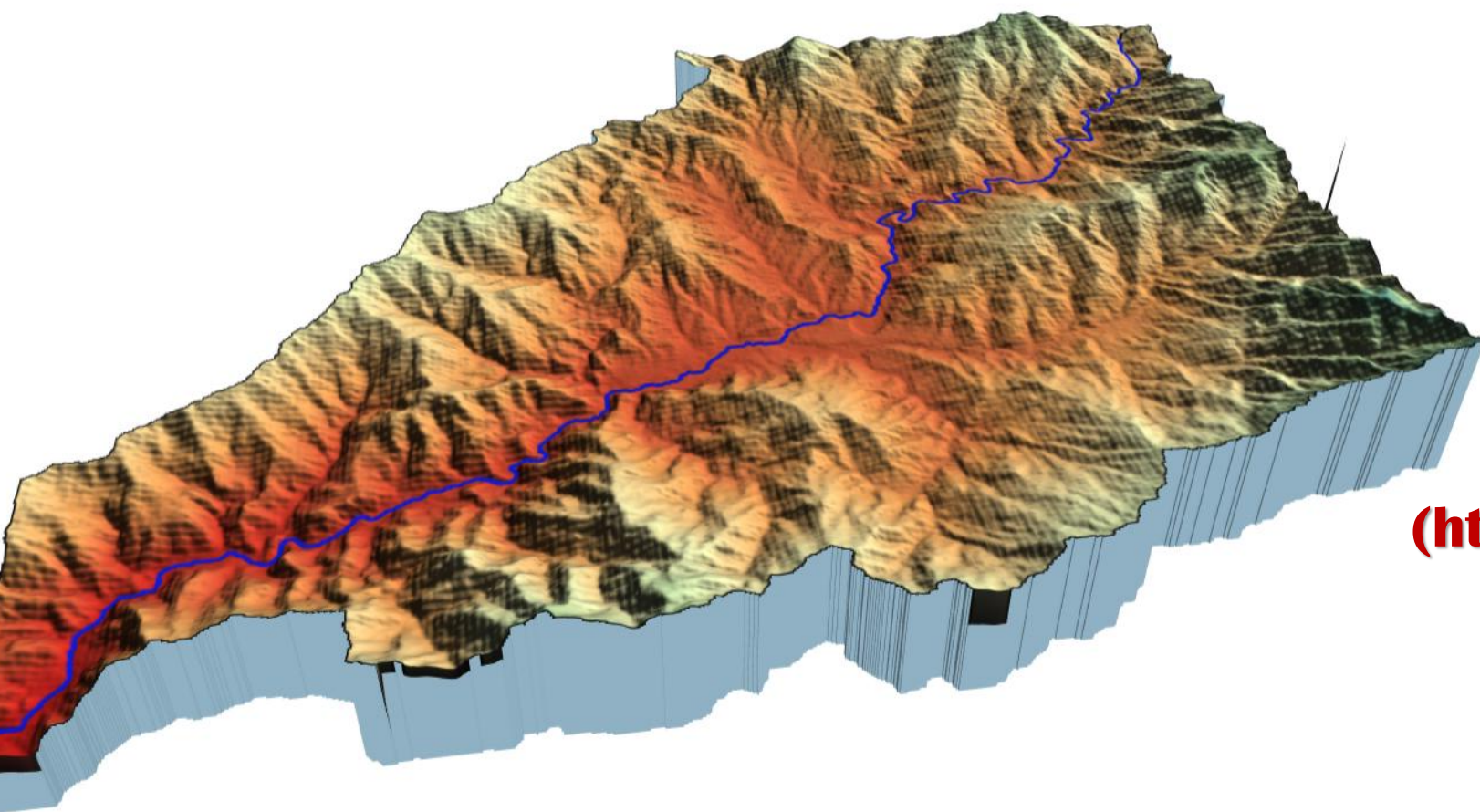


An ISO 9001:2015 and MSME certified organisation

3 month hands on virtual training on **Mastering QGIS in Geospatial Analysis & Automation**



by

Quest GIS

(<https://questgis.co.in/>)

- ❖ Course duration: 15-August-2025 to 14-November-2025.
- ❖ Last date to register: 14-August-2025
- ❖ Detailed Course content: Go to next pages!
- ❖ Course Language: English
- ❖ Class timings: 8:00 pm to 10:00 pm (IST)

CERTIFIED

Time duration : 2 (+) hrs each day

Location: via Zoom (link will be provided to participants 24 hours before the course begins)



Contact us

 quest4gis@gmail.com

 +91 6397078447

 <https://questgis.co.in/>

An ISO 9001:2015 and MSME certified organisation

3 month hands on virtual training on Mastering QGIS in Geospatial Analysis & Automation



- ❖ Hands on with Real world projects.
- ❖ Special discounts for students *
- ❖ Payment in instalments available **
- ❖ Course Language: English



***, ** : Check availability on website - <https://questgis.co.in/upcoming-courses/>**

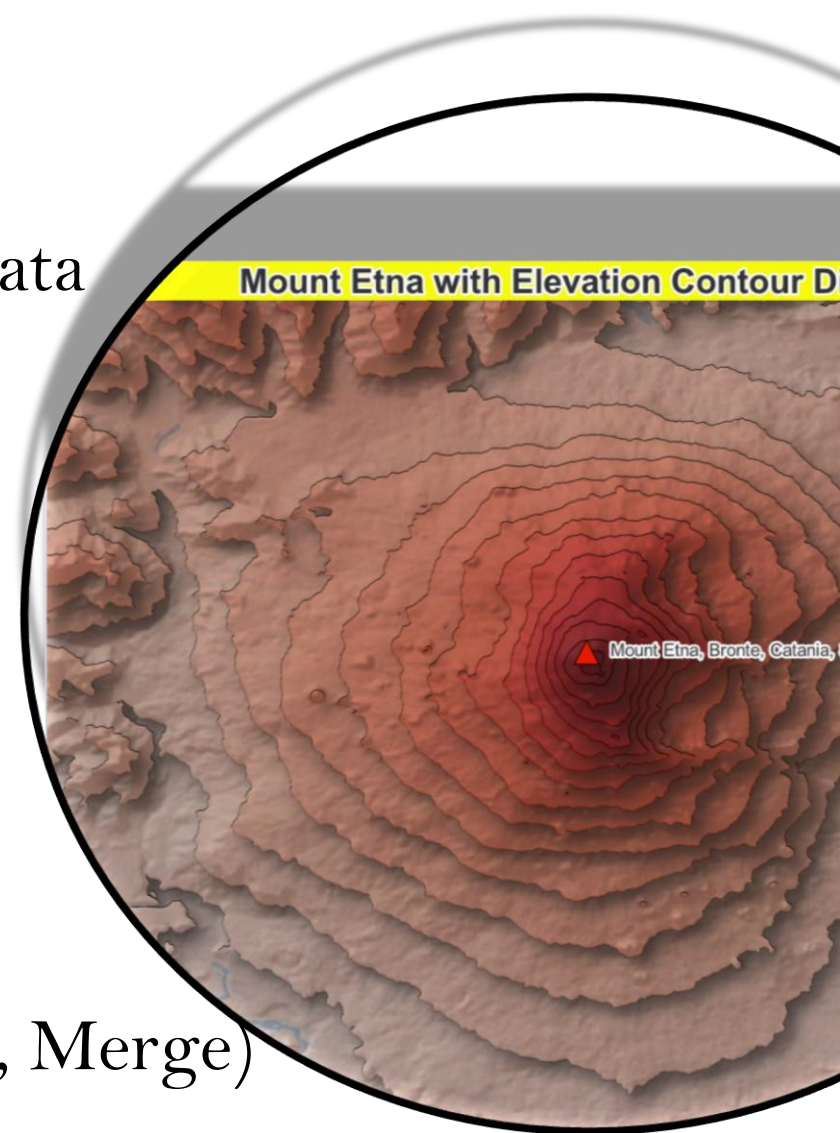


Contact us
✉ quest4gis@gmail.com
☎ +91 6397078447
🌐 <https://questgis.co.in/>

Interactive mapping and hands-on training through the projects

Month 1: Foundations of GIS & QGIS

- ☐ Introduction to GIS, Remote Sensing & Spatial Data Types
- ☐ QGIS Interface & Project Setup
- ☐ Loading and Styling Raster & Vector Data
- ☐ Visualization of Spatial Data
- ☐ Plugin installation and uses
- ☐ Georeferencing and Digitization
- ☐ Map Layouts and Exporting Maps
- ☐ Basic Geoprocessing Tools (Buffer, Clip, Merge)
- ☐ Attribute Table Operations & Field Calculations

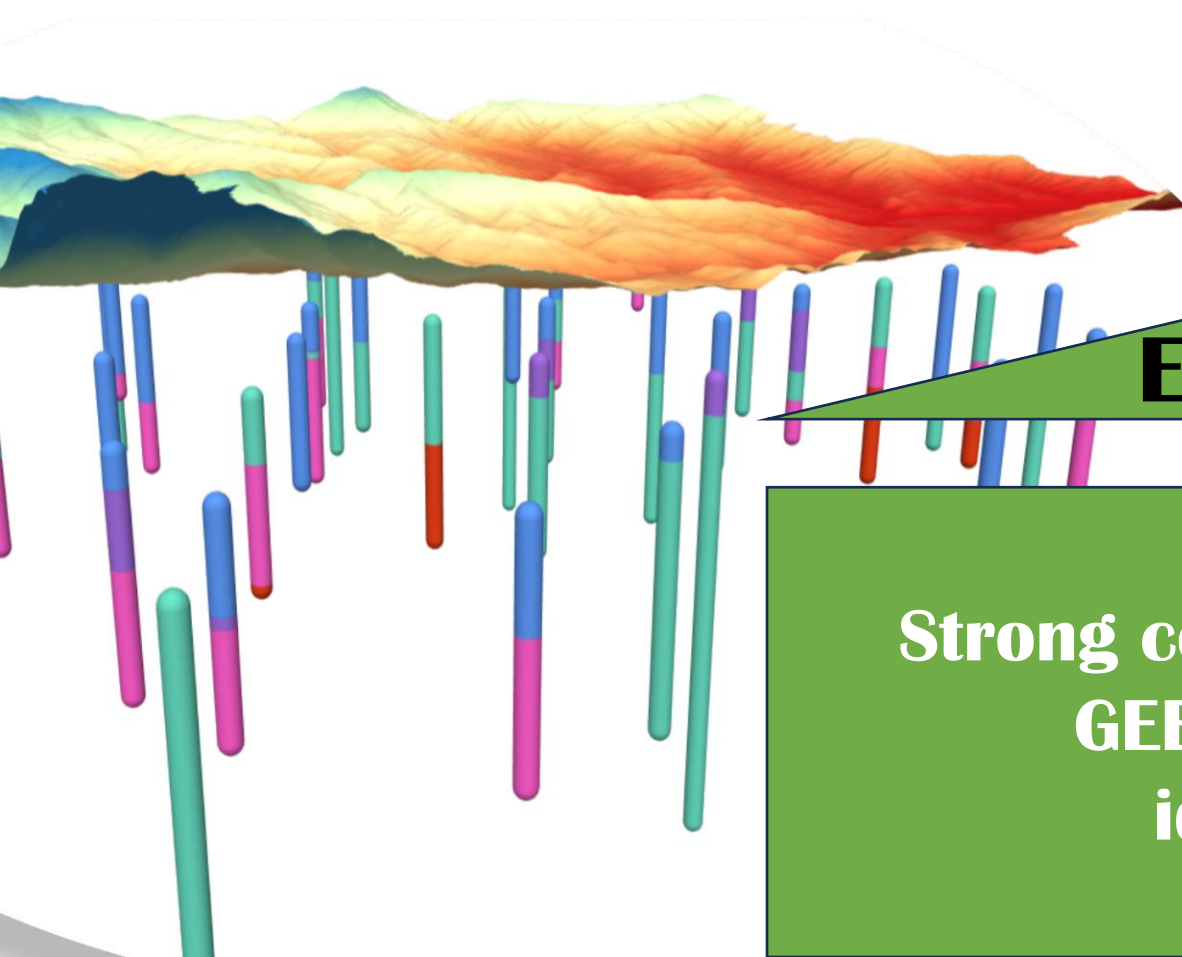


Expected outcome

**Strong command in GIS using QGIS
with hands-on UI optimization,
map design and analysis.**

Month 2: Intermediate to Advanced QGIS + Introduction to GEE

- ❑ Raster Analysis: Hydrological analysis, Area-volume calculations, NDVI, LULC, Terrain analysis (Slope, DEM, Hillshade etc).
- ❑ Vector Analysis: Spatial Joins, Trends and pattern analysis, Geostatistics, Network Analysis etc.
- ❑ Model Builder & Workflow Automation
- ❑ Introduction to Python API in QGIS and its significance.
- ❑ Introduction to Google Earth Engine and its significance
- ❑ GEE Code Editor Interface & JavaScript Basics
- ❑ Importing & Visualizing Satellite Imagery (Landsat, Sentinel)



Expected outcome

Strong command in QGIS Python API and GEE with hands-on data processing, identifying patterns and analysis.

Month 3: Advanced GEE + Integrated Projects

- ☐ Integrating QGIS & GEE for Hybrid Workflows
- ☐ Time-Series Analysis in GEE (e.g., NDVI, precipitation trends)
- ☐ Spectral Indices & Classification
- ☐ Change Detection Techniques
- ☐ Exporting Data from GEE to QGIS
- ☐ Final Project Development & Presentation

Expected outcome

Strong command of QGIS & GEE with hands-on data processing experience and ability to identify patterns & analyse geospatial datasets. Command over integration of multi-source data for insightful spatial analysis.



Salient features

- E-certificate (see last page for certification pre-requisites).
- Class recording will be provided.
- Free data and multiple assignments for hands-on practice.
- Step by step guidance during entire course.
- Get lifetime access to the WhatsApp group.
- One-to-one interaction with trainer and participants.

Who should attend?

Knowledge of GIS is a desirable skill in industries from agriculture to public health etc., So our target participants includes

- Students and beginners with little or no prior experience in GIS.
- Curious participants from every possible background.

✓ Geology

✓ Archaeology

✓ Hydrologists

✓ Geophysics

✓ Geoinformatics

✓ Oil and gas

✓ Earth science

✓ Geotechnical

✓ GIS professionals

✓ Mining

✓ Oceanographers

✓ Academic researchers



Contact us

 quest4gis@gmail.com

 +91 6397078447

 <https://questgis.co.in/>

**Limited
seats!**

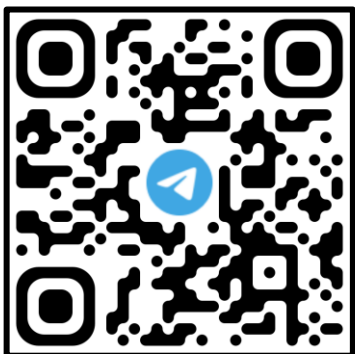
Course fees

**INR 6100/- or USD 100/- per head
only for three months!**

To submit the course registration,

Visit: <https://questgis.co.in/upcoming-courses/>

Your seat is confirmed only when you register and share the payment proof.



Contact us

 quest4gis@gmail.com

 +91 6397078447

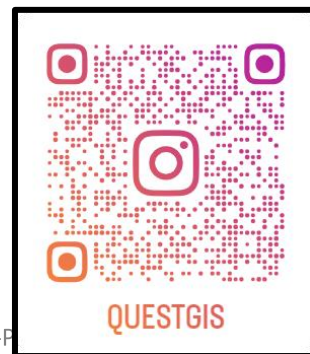
 <https://questgis.co.in/>

Certificate of completion

Pre-requisites for certificate

1. Complete and correct submission of weekly assignments as instructed during course.
2. Complete and correct submission of one final assignment as instructed during course.
3. 70% score in a final quiz.

Please note: Certificate of completion will be issued to candidates, only one meets the above requirements. This will ensure the high quality of the course and can guarantee the knowledge gained by each participant.



Contact us

 quest4gis@gmail.com

 +91 6397078447

 <https://questgis.co.in/>